

BI-DIRECTIONAL TUBE & PIPE INSULATOR

558 series

BiFolator™

Item # Submitted	_____
Job Name	_____
Location	_____
Engineer	_____
Contractor	_____
PO#	_____ TAG _____

SPECIFICATION

Sioux Chief's BiFolator™ bi-directional tube and pipe insulator shall be used where necessary to insulate CTS copper, PEX, or CPVC piping in residential or commercial applications. Use on metal studs or brackets when a 1¹¹/₃₂" diameter hole is made or use on wood studs when a 1³/₈" hole is made. Sioux Chief's BiFolator is designed to insulate both 1/2" CTS and 3/4" CTS using a single insulator.

INSTALLATION

After making a 1³/₈" hole in wood stud or 1¹¹/₃₂" hole in metal stud and installing either 1/2" or 3/4" CTS, locate the side of the BiFolator that matches the size tube. Wrap insulator around tube so that concave side with the matching tube size indicated on BiFolator touches respective tube. Once tube is wrapped, hold the insulator with fingers and push the leading edge into stud hole cavity until stop tabs touch and are flush with the stud's surface. The fins of the BiFolator prevent the tube from touching the wood or metal surface. Flip the BiFolator around and install in same fashion to insulate alternate tube size, as indicated on BiFolator.

MATERIALS

ivory: low-density polyethylene (LDPE)
E84 plenum-safe orange: polyvinylidene fluoride (PVDF),
 meets ASTM E84 25/50 and UL-94 V0 flame rating

SAFE WORKING TEMPERATURE

Maximum temperature: 180°F (82°C)
 Impact resistance to 0°F (-18°C)

DIMENSIONS

A: Unrolled length 3.20"
 B: Depth 0.86"

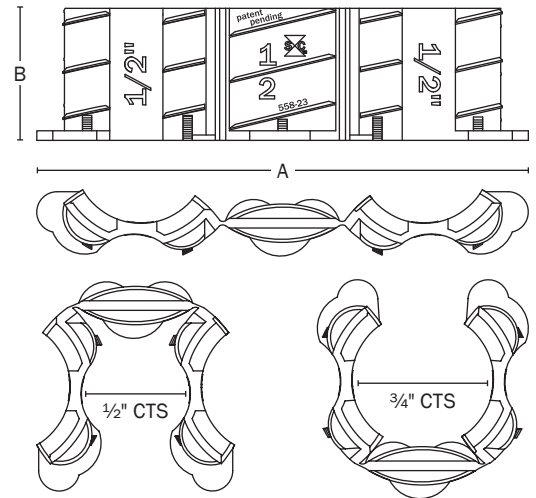
* Not for use on copper heat recirculating lines.



558-23



558F23



Create Item Number

558 A 23

e.g. 558-23 = ivory BiFolator for 1/2" and 3/4" CTS

- A MATERIAL
- - ivory LDPE (dash)
- F orange E84 plenum-safe PVDF