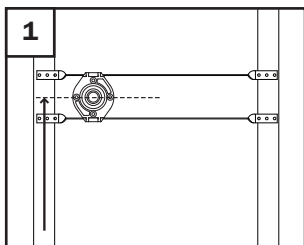


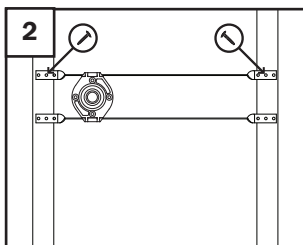
Strong Arm™

with Shower WallNut Lock Blocks™

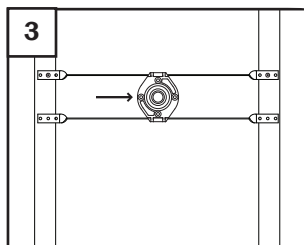
Instruction Sheet



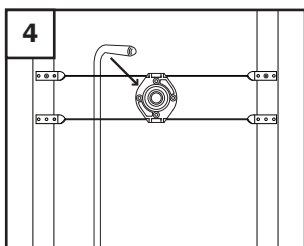
Determine stub out height.



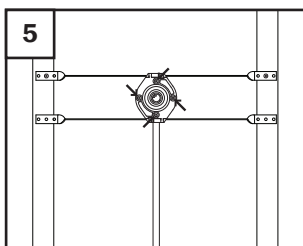
Secure top bracket to face of stud bay at desired position for shower arm stub out.



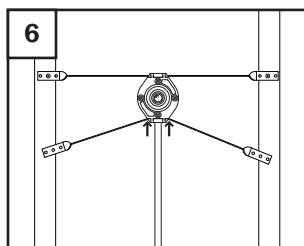
Slide Lock Block across bracket.



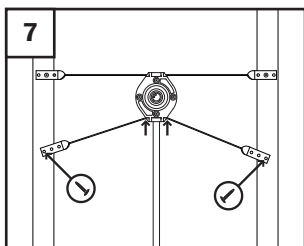
Insert copper shower riser ell into Lock Block.



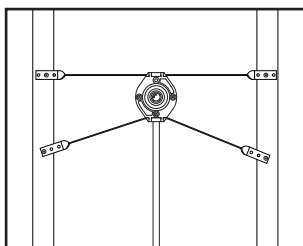
Install screws into all four screw holes and tighten. Block will compress around copper and on brackets to prevent lateral movement.



As close as possible to each side of block, bend the bottom bracket downward. Bending the bottom bracket provides the most rigid installation.



Secure ends of bottom bracket to studs.



Installation complete.