

# COPPER STUB OUT BRACKET

521-85 series

Secure-All™ Bracket

## SPECIFICATION

Sioux Chief's Secure-All copper plated bracket shall be used where necessary to support 1/2", 3/4" or 1" nominal copper stub outs for water supply lines. Bracket shall be made from heavy-gauge, copper plated steel with a clear coat finish to reduce corrosion. Bracket shall be plated after stamping to eliminate areas of exposed plain steel.

Bracket design shall include extruded holes or notches for additional soldering surface and stiffening ribs along top and bottom of bracket for ultimate strength and rigidity.

## INSTALLATION

Wear gloves and eye protection when handling metal brackets to avoid injury. Using approved hardware, secure bracket with nail or screw to stud through any pre-drilled pilot hole. Clean and prepare copper stub out for soldering. Select desired pipe hole. Insert copper stub out into pipe hole. Apply heat to copper tube, not bracket, to solder.

## MATERIALS

18-gauge copper-plated steel

## MAXIMUM LOAD RATING

25 lbs.

## DIMENSIONS

	521-851	521-852
A: overall length	20"	26"
B: overall height	2.375"	2.375"
C: number of 1/2" CTS notches	7	11
D: distance between 1/2" CTS notches	2" on-center	2" on-center
E: number of 3/4" CTS notches	6	10
F: distance between 3/4" CTS notches	2" on-center	2" on-center
G: number of 1/2" CTS holes	7	11
H: distance between 1/2" CTS holes	2" on-center	2" on-center
I: number of 3/4" CTS holes	3	5
J: distance between 3/4" holes	4" on-center	4" on-center
K: number of 1" CTS holes	3	5
L: distance between 1" CTS holes	4" on-center	4" on-center
M: nail hole diameter	0.19"	0.19"
material thickness	0.048"	0.048"

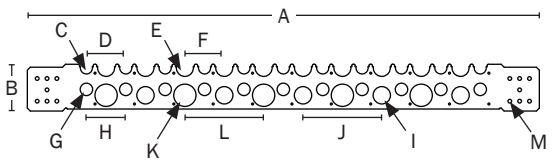
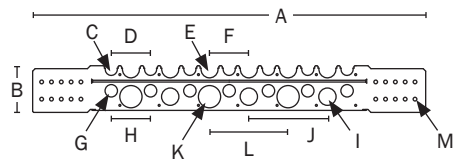
Item # Submitted	_____
Job Name	_____
Location	_____
Engineer	_____
Contractor	_____
PO#	_____ TAG _____



521-851



521-852



Create Item Number

**521-85 A**

e.g. 521-851 = Secure-All bracket for 16" stud bays

- A STUD BAY
- 1 16"
- 2 24"