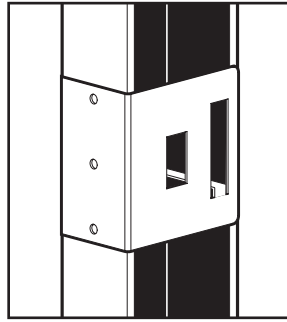
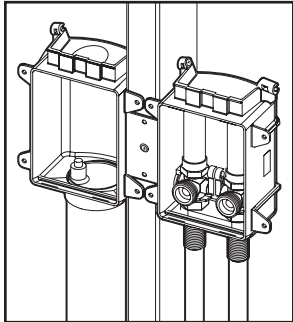


Ox Box™

Fire-Rated Washing Machine Outlet Box

Metal Stud Support Soporte de Metal del Montante



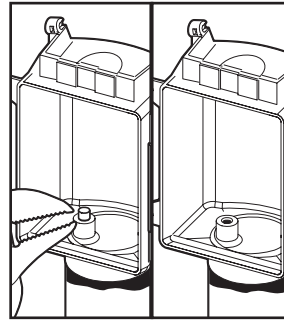
Listed by Warnock Hersey to meet
ASTM E-814
2 hours (F), 1½ hours (T) for 2-hour design
1 hour (F), 31 mins (T) for 1-hour design
ASTM E-119
Package includes factory-installed intumescent pads.

Ajuste a ASTM E-814
2 horas (F), 1½ horas (T) for diseño de dos horas
1 hora (F), 31 minutos (T) for diseño de la hora
Ajuste a ASTM E-119
El paquete incluye almohadillas intumescentes
instaladas por la fabrica.

Tab folds into metal stud for
added rigidity.

Los punteros doblen adentro
del montante de metal para
mas rigidez.

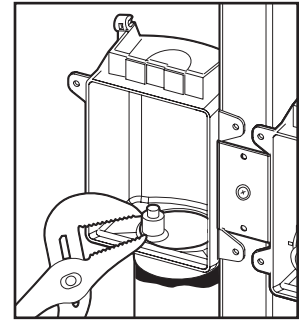
Test the System Prueba el Sistema



Twist off small tip. Connect 5/8"
O.D. compression fitting for air
or water test.

Rompe la punta pequeña
torciéndola. Conecta la parte
suelta de compresión de 5/8
diámetro exterior a la prueba
de aire o agua.

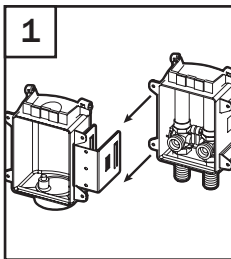
Remove Test Cap Remueve la Tapa de Probar



Remove the test cap by
clamping and twisting off the
test nipple.

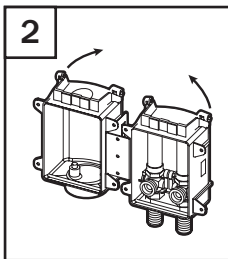
Remueve la tapa de probar
con abrazando y torciendo el
pezón de probar.

Installation Instructions Instrucciones de Instalación



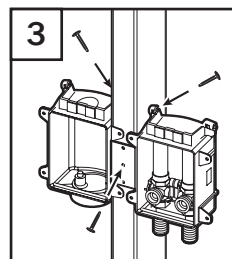
1
Clip boxes together in
desired configuration.
Clip slides into tracks.

Sujete las cajas juntas
en la configuración
deseada. Sujete los
lados adentro de las
vías.



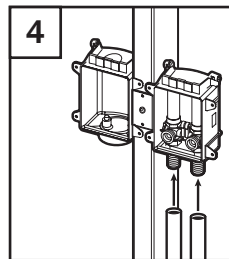
2
Gently bend boxes
together. This will allow
the boxes to hold onto
the stud.

Suavemente doble
las cajas juntas. Esto
dejara que las cajas
sostengan sobre el
montante.



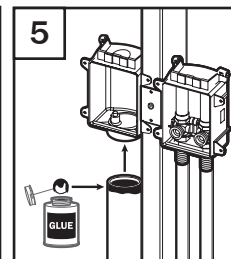
3
Secure with nails/
screws in the middle of
the box clip and the top
nailways.

Asegure con clavos/
tornillos en medio de
la caja de sujetar y los
caminos de arriba de
clavos.



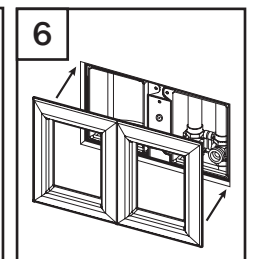
4
Plumb the supply lines
in the typical manner.
Open valves before
soldering.

Aplome las líneas de
provisión en la manera
típica. Abre las válvulas
antes de soldar.



5
Plumb the drain line in
the typical manner. Wait
for glue to cure before
testing.

Aplome la línea de
desagüe en la manera
típica. Espera que el
pegamento cure antes
de probar.



6
Install the frame after
the wall has been
finished.

Instale el marco
después que sea
terminado la pared.

WASHING MACHINE

Caja de Abertura de la Lavadora

Includes: supply box with pad, drain box,
box clip, 18" galvanized support bar

Incluye: caja de provisión con una almohadilla,
caja de desagüe, sujetador de caja,
barra de soporte galvanizado de 18"

Patent Pending
Patente Pendiente

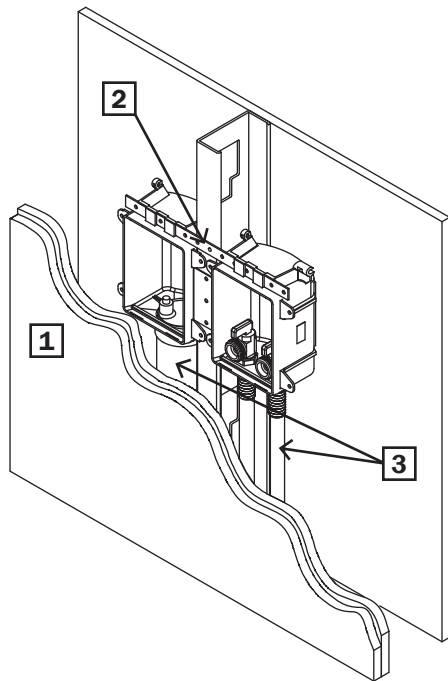
**Sioux
Chief**
MANUFACTURING SINCE 1957



Fire-Rated Ox Box™

Outlet Box

Design Specification



1 Wall Construction

- a Wood or metal stud construction, max 100 in.² of penetrations per 100 ft² of wall
- b Single-layer 5/8" gypsum construction with 1-hour fire rating
- c Double-layer 5/8" gypsum construction with 2-hour fire rating
- d Boxes cannot be installed back to back

2 Pipe/Box Support

- a Each outlet box must be installed in a separate stud bay and attached to the stud, as shown below in "over-stud" or "separate stud bay" installation examples. Fire rating does not apply to installations of two or more boxes in the same stud bay.
- b Supplied support bar to be installed through at least one box's slotted opening
- c Supply lines to be installed using ordinary methods
- d Drain line to be supported using ordinary methods

3 Pipe Material

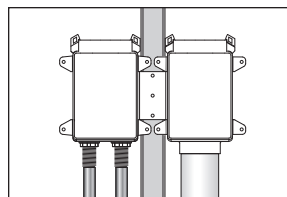
- a 2" or larger metallic, PVC, or ABS DWV pipe
- b Metallic or plastic water supply pipe

4 Firestop Device

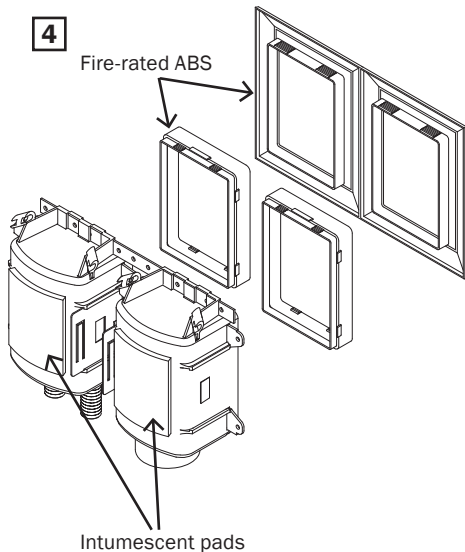
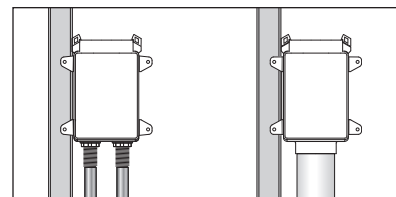
- a Sioux Chief fire-rated Ox Box frame and frame extension are constructed using fire-rated resin. Boxes have 4" x 4" intumescent adhesive pads factory installed on the back of boxes.

NOTE: Gaps up to 1/2" around box can be sealed with drywall plaster. Larger gaps require firestop sealant applied to opening spanning entire drywall depth.

"over stud" installation



"separate stud bay" installation



The Fire-Rated Ox Box is certified by Intertek/Warnock Hersey to the following Fire Rating Standards:

ASTM E-814

2 hours (F), 1½ hours (T)
for 2-hour design
1 hour (F), 31 mins (T)
for 1-hour design
ASTM E119

CAN/ULC S115

2 hours (F), 1½ hours (T)
for 2-hour design
1 hour (F), 31 mins (T)
for 1-hour design
UL 1479



DISTRIBUTED BY

24110 South Peculiar Drive
Peculiar, Missouri 64078
tel: 1-800-821-3944
fax: 1-800-758-5950
www.siouxchief.com

