

GALVANIZED STEEL SADDLE CLAMP

523 series

Saddle-Up™

Item # Submitted	_____
Job Name	_____
Location	_____
Engineer	_____
Contractor	_____
PO#	_____ TAG _____

SPECIFICATION

Sioux Chief 523 Series Saddle-Up™ DWV saddle clamp shall be used in conjunction with stainless steel worm gear band where necessary for fastening piping or other conduit. Saddle clamp may be used with the Power Bar™ adjustable bracket, or may be fastened directly to building member. Clamp shall be galvanized for corrosion resistance.

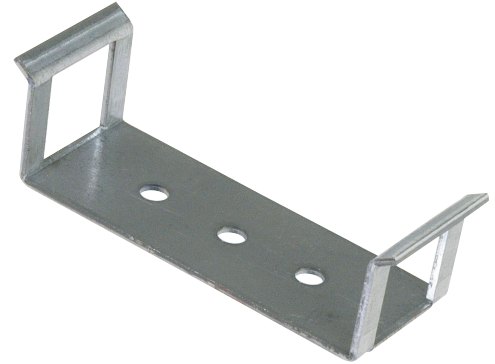
MATERIALS

18-gauge galvanized steel

INSTALLATION

When used with the Power Bar adjustable bracket: Load the Saddle-Up onto the bracket. Fasten or secure the bracket as needed. Slide clamp to desired location along bracket, and insert stainless steel band through slots in clamp. Wrap band around pipe or conduit and insert tab into worm-gear mechanism, and tighten as usual.

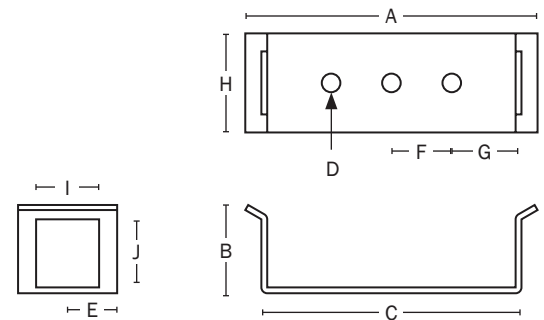
When mounted to wall or building member: Fasten the clamp to a wall or other building member with two screws. Be sure the screws used are long enough to secure the intended load. Insert stainless steel band through slots in clamp. Wrap band around pipe or conduit and insert tab into worm-gear mechanism, and tighten as usual.



523-1

DIMENSIONS

A: Overall length	2.95" min.
B: Overall height	0.875"
C: Base length	2.625"
D: Mounting hole diameter	0.188"
E: Side to hole center	0.5"
F: Mounting hole spacing	0.609" on center
G: End to hole center	0.704"
H: Overall width	1"
I: Slot width	0.636"
J: Slot height	0.687"



Create Item Number

523-1

ACCESSORIES

- 574-72 5" stainless steel worm-gear band for 5" max O.D. conduit
- 574-104 7" Snap-Lock style stainless steel worm-gear band for 7" max O.D. conduit