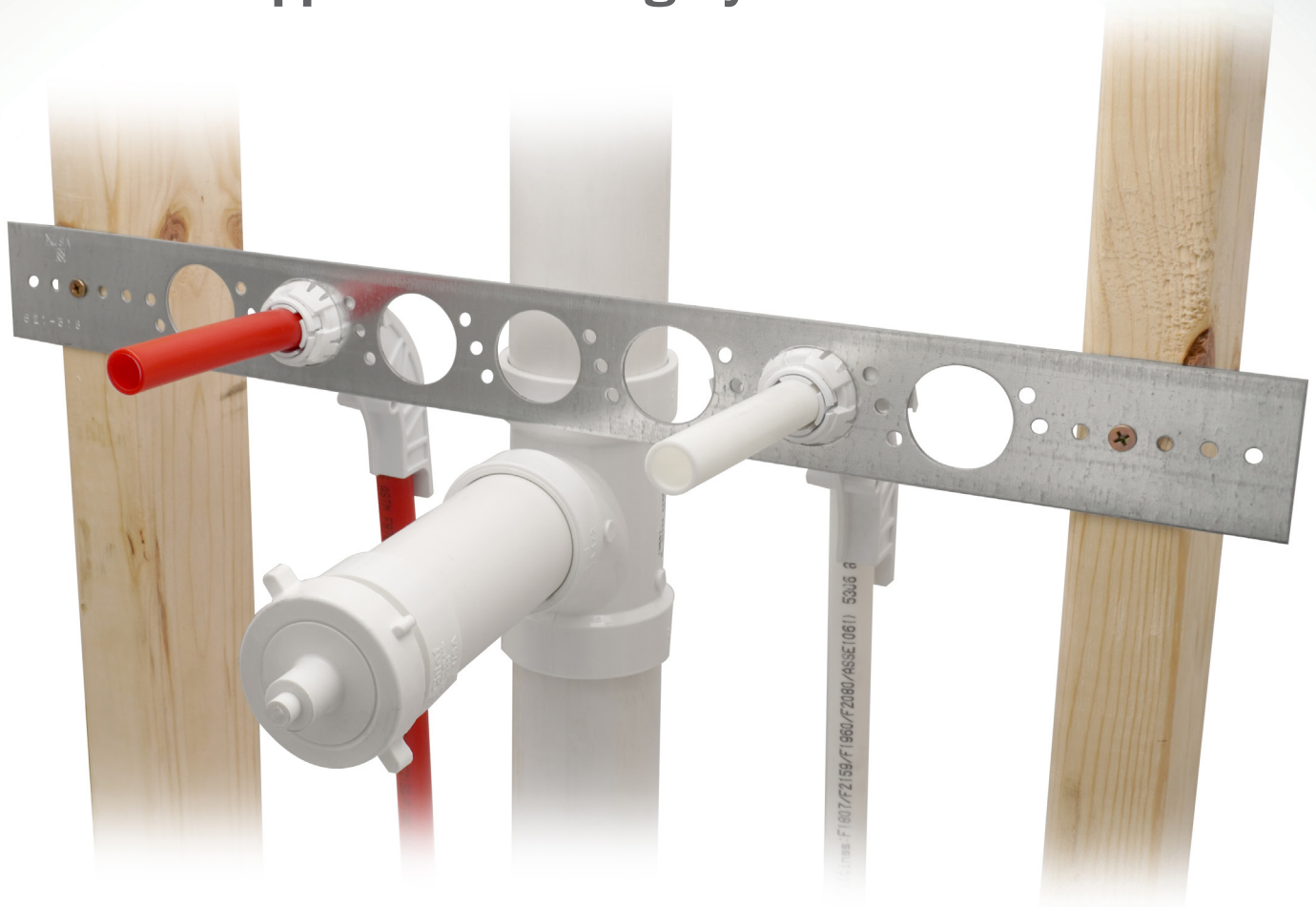


SnapBack™

 Bend Support Bracketing System



Versatile

Provides a great solution when you need to mount PEX bend supports to the FACE of the stud.

Secures bend supports: to any flat/grommet bracket, 'hyco' bars, or any 1-11/32" punched hole in metal studs.

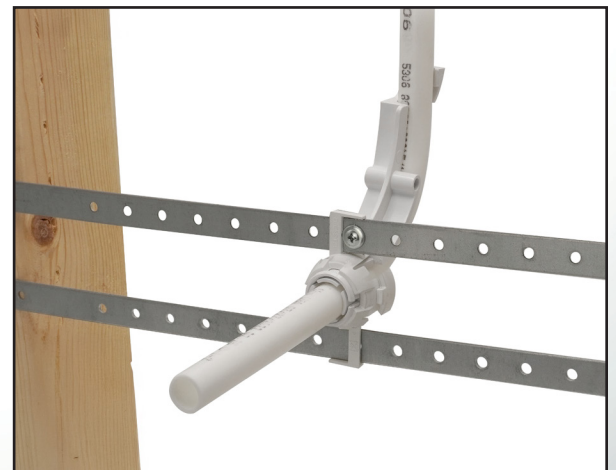
Bend supports can be rotated after installation

Cost Effective

Easy to install - reduces labor, liability, and additional materials

 **Designed and Made in the USA**

Mount to two 'hyco' bars using integral top/bottom slots – secure with a single screw to lock in place



Supply

Drainage

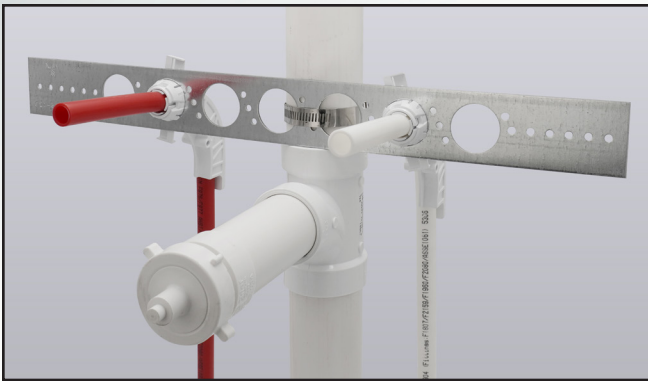
Support

Specialties

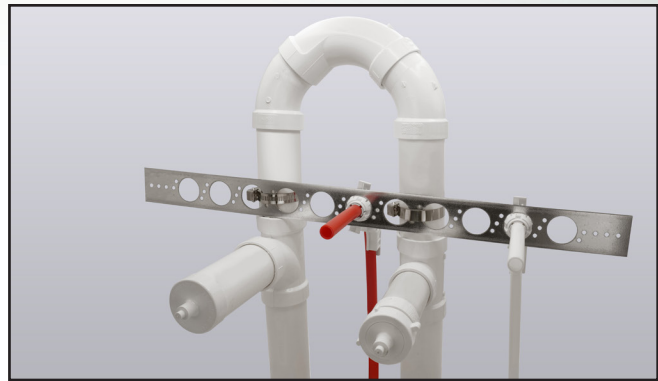
www.siouxchief.com

TAKE THE FIELD.

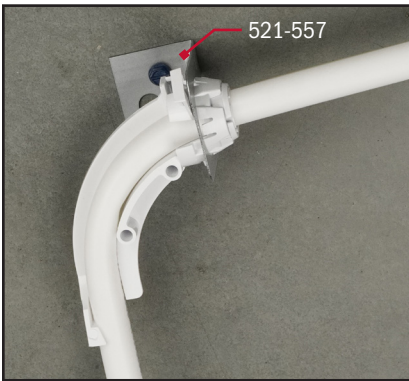




Snaps into any flat bracket with 1-11/32" grommet openings



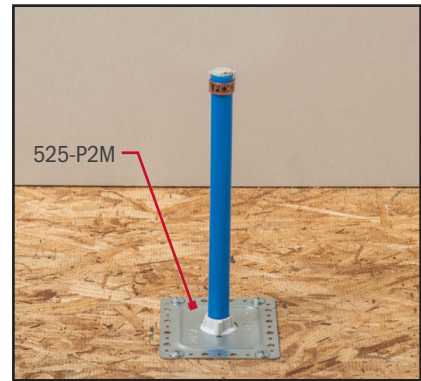
Mount bracket to DWV where studs aren't available
Perfect for kitchen islands with vent loops



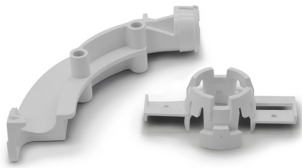
Works with suspension brackets for commercial ceiling chases



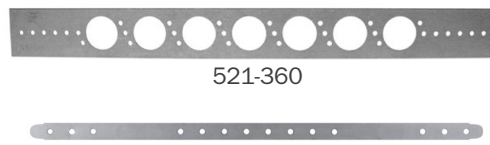
Secures and protects PEX bends in punched metal studs



Secures stub ups through sub floor



521-3SBP2



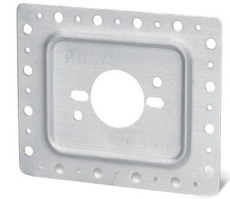
521-360



525-6918



521-3725B



525-P2M

» Buying Information

ITEM NO.	DESCRIPTION	MIN. QTY.	CASE QTY.
SnapBack Bend Support			
521-3SBP2	1/2" PEX bend support with SnapBack mounting face	50	50
Brackets & Accessories			
521-318	2" x 20" Galvanized flat stud bracket with grommet openings - 14 gauge	50	50
521-360	2" x 26" Galvanized flat stud bracket with grommet openings - 14 gauge	50	50
521-3725B	3" x 4" Galvanized L-bracket with grommet openings - 14 gauge	100	100
521-557	Galvanized suspension bracket with ONE grommet opening	25	25
521-558	Galvanized suspension bracket with TWO grommet openings	25	25
521-559	Galvanized suspension bracket with FOUR grommet openings	25	25
525-6918	5/8" x 18" Galvanized Hyco-type support bracket - 16 gauge	100	100
525-6920	5/8" x 20" Galvanized Hyco-type support bracket - 16 gauge	100	100
525-6926	5/8" x 26" Galvanized Hyco-type support bracket - 16 gauge	100	100
525-P2M	3-3/8" x 4-1/4" Galvanized mounting plate	100	100