

GENERAL PURPOSE BRACKET

» 525 SERIES

Support Bracket

SPECIFICATION

Sioux Chief 525 series general purpose, perforated support bracket shall be used where necessary for securing CTS water supply lines vertically or horizontally within a wood or metal 2x4 stud wall. Support bracket is galvanized with pilot holes. Bracket shall resist corrosion. Bracket may be bent if necessary to fit inside stud or joist cavity.

INSTALLATION

Secure each end of bracket to stud or joist using approved hardware (not included). Install tube or pipe through clamp and attach to bracket using #12 screws.

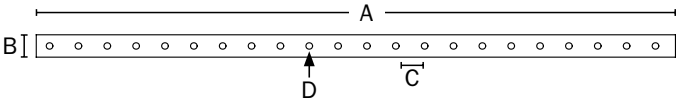
MATERIALS

Brackets: 14-gauge (.067-.075)

DIMENSIONS

	525-20	525-26
A: length	19.5"	26"
B: height	0.625"	0.625"
C: hole spacing	0.821"	0.821"
D: hole diameter	0.188"	0.188"

ITEM # SUBMITTED	_____
JOB NAME	_____
LOCATION	_____
ENGINEER	_____
CONTRACTOR	_____
PO#	_____ TAG _____



Made in USA

Create Item Number

525-A
e.g. **525-20:** 20" support bracket

BRACKET LENGTH A
20 = 20"
26 = 26"