

SIDE BEAM CONNECTOR

» 540

SPECIFICATION

Sioux Chief 540 Side Beam Connector shall be used where necessary to suspend or support IPS or CTS piping when installing 3/8" threaded rod from steel I-beams and in accordance with national code requirements.

INSTALLATION

Secure side beam connector to steel beam using approved hardware (not provided). Thread rod through side beam connector and secure rod with hex nuts (not provided) above and below the threaded rod receiver.

MATERIALS

Malleable iron

SAFE WORKING LOAD

250 lbs.

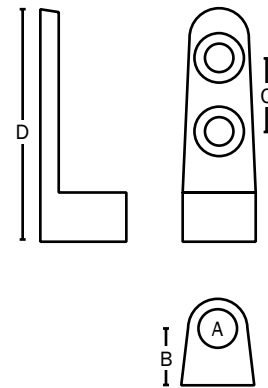
DIMENSIONS

- A: Thread rod receiving hole 3/8"
- B: Centerline 5/16"
- C: Hole size 9/32" countersunk
- D: Height 2 3/8"

ITEM # SUBMITTED	_____
JOB NAME	_____
LOCATION	_____
ENGINEER	_____
CONTRACTOR	_____
PO#	_____ TAG _____



540



Made in China

Item Number	
540	