

CLEANOUT FERRULE FITTING

» 853 SERIES

SPECIFICATION

Sioux Chief 853 series cleanout ferrule. Coated cast iron body with gas and watertight threaded plug. Designed in accordance with ASME A112.36.2M

Used at pipe terminations on drainage lines where a cleanout is required

MATERIALS

Ferrule: Coated cast iron

Plug: brass

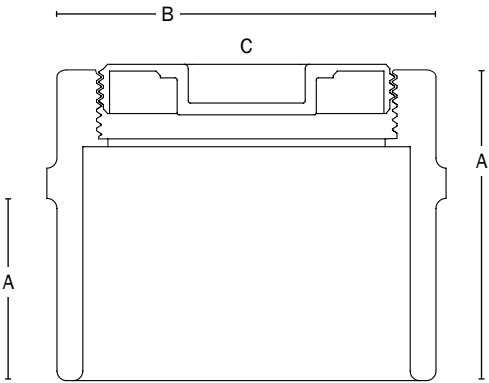
DIMENSIONS

Connection (No-Hub)	2"	3"	4"	6"
A: Overall height	2-1/4"	2-1/4"	2-1/4"	4-1/2"
B: Overall diameter	2-3/8"	3-3/8"	4-7/16"	6-5/16"
C: Plug size (NPT)	1-1/2"	2-1/2"	3-1/2"	5"
D: Connection height	1-1/8"	1-1/8"	1-1/8"	1-1/2"

ITEM # SUBMITTED	_____
JOB NAME	_____
LOCATION	_____
ENGINEER	_____
CONTRACTOR	_____
PO#	_____ TAG _____



853-F24I



Create Item Number

853-A

e.g. **853-F24I**: 4" No-Hub cast iron cleanout ferrule with brass plug

FITTING SIZE A

- F22I** = 2" No-Hub
- F23I** = 3" No-Hub
- F24I** = 4" No-Hub
- F26I** = 6" No-Hub

Available Separately:

- 870-93**: 3" diameter stainless steel wall cleanout cover - 16GA
- 870-94**: 4" diameter stainless steel wall cleanout cover - 16GA
- 870-95**: 5" diameter stainless steel wall cleanout cover - 16GA
- 870-96**: 6" diameter stainless steel wall cleanout cover - 16GA
- 870-98**: 8" diameter stainless steel wall cleanout cover - 16GA
- 870-910**: 10" diameter stainless steel wall cleanout cover - 20GA
- 870-912**: 12" diameter stainless steel wall cleanout cover - 20GA