

HydroBlock 300 System Ductile Iron Channel/Grate / F900

Product Specifications

Part No.:
865-HB1200FA

Load Class:

F900 (198,000 lbs) according EN 1433
Certified by MPA-HB (independent laboratories)

Material:

Ductile Iron GJS-500-7
(ASTM A536 70-50-05)

Weight:

242.51 lbs (110.0 kg)

Surface:

Slot design (3.07" x 1.57")
ensures high water intake.
Slip-resistant design.

Water Intake:

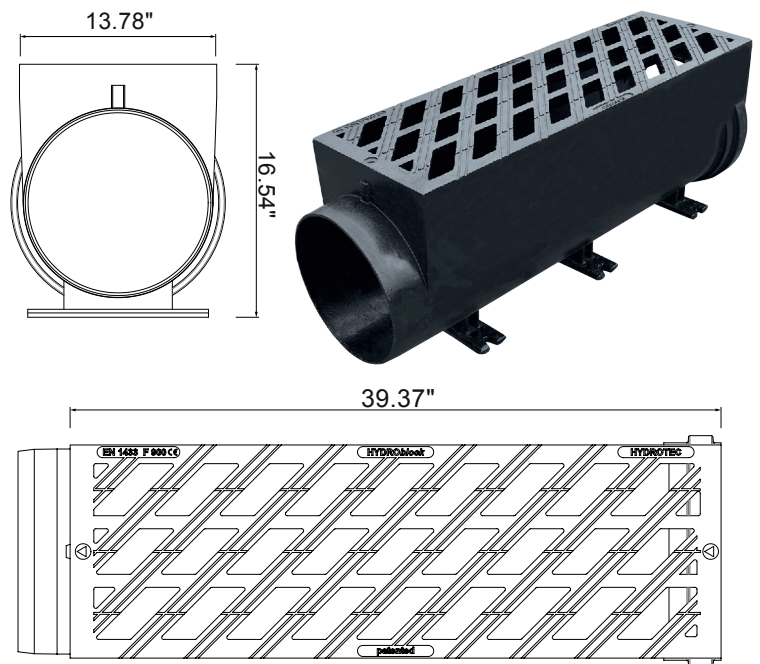
184.5 sq/in (1190 cm²)

Locking:

One piece trench drain with no loose parts. Outlet sections are locked by 4 stainless steel screws.

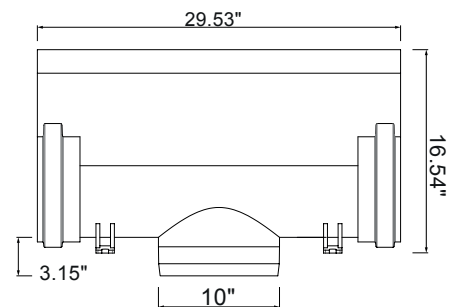
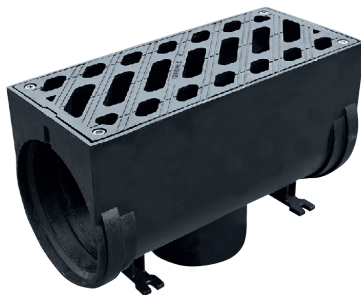
Use:

This channel is developed to be installed in areas with high dynamic forces. HydroBlock is qualified as "Type I" according EN 1433.



Outlet Sections

Bottom Outlet Part No.: 865-HB12005BFA



System Specifications

HydroBlock 300:

The channel section is made of ductile iron and certified to EN 1433 Load Class F900 and is qualified as TYPE I. The gasket connection ensures a fast, watertight installation.

Bottom Outlet (865-HB12005BFA):

Outlet section length is 29.53" (3/4 m). Outlets are recommended at least every 75ft as inspection points to the channel run.

It is connected to the ground pipe by a 10" pipe.

Debris screen:

Debris screen is made from galvanized steel and is designed to reduce leaves and other large objects from entering the drain pipe.

