

BRASS CLEANOUT PLUG

» 876/877 SERIES

SPECIFICATION

Sioux Chief 876/877 series brass cleanout plugs shall be used where necessary in residential or commercial plumbing supply systems. Plugs shall be brass material for durability and corrosion-resistance. Plugs shall have a raised square lug on the face, or countersunk square recess for installation and removal. Threads designed in accordance with ASME B1.20.1.

ITEM # SUBMITTED	_____
JOB NAME	_____
LOCATION	_____
ENGINEER	_____
CONTRACTOR	_____
PO#	_____ TAG _____

MATERIALS

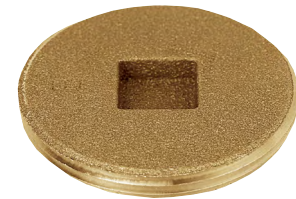
Brass

DIMENSIONS

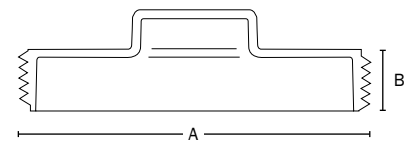
Thread size	1½"	2"	2½"	3"	3½"	4"	5"	6"
A: Diameter	1⅞"	2⅜"	2 ¹³ / ₁₆ "	3½"	4"	4 ⁷ / ₁₆ "	5½"	6 ⁹ / ₁₆ "
B: Thickness	½"	½"	½"	½"	½"	½"	9/16"	9/16"



876-30



877-30



Select Item Number

RAISED SQUARE HEAD PLUG

- 876-15PK** = 1½" brass cleanout plug
- 876-20PK** = 2" brass cleanout plug
- 876-25PK** = 2½" brass cleanout plug
- 876-30** = 3" brass cleanout plug
- 876-35** = 3½" brass cleanout plug
- 876-40** = 4" brass cleanout plug
- 876-50** = 5" brass cleanout plug
- 876-60** = 6" brass cleanout plug

COUNTERSUNK SQUARE HEAD PLUG

- 877-20** = 2" brass cleanout plug
- 877-25** = 2½" brass cleanout plug
- 877-30** = 3" brass cleanout plug
- 877-35** = 3½" brass cleanout plug
- 877-40** = 4" brass cleanout plug
- 877-60** = 6" brass cleanout plug