

WALL TERMINATION FITTING

615 SERIES

SPECIFICATION

Sioux Chief 615 Series wall termination fitting shall be used where necessary in plumbing systems. Termination fitting shall have a one-piece forged brass body with integral mounting plate to provide a rigid transition and reduce loose or fragile wall penetrations. CPVC socket shall include an o-ring seal and be surrounded/protected by brass fitting body.

MATERIALS

Fitting Body: C377 Brass

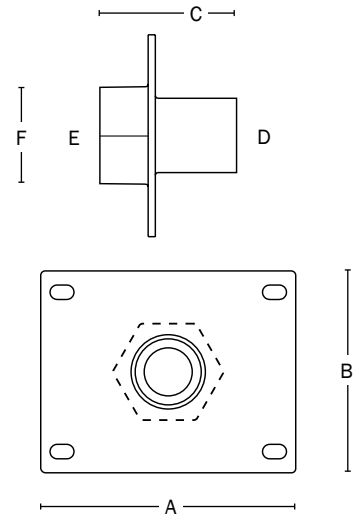
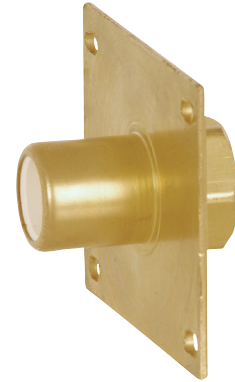
Fitting Socket: CPVC

O-ring: EPDM

DIMENSIONS

| | |
|-----------------------------|------------------|
| A: Plate width | 3" |
| B: Plate height | 2-3/8" |
| C: Overall depth | 1-5/8" |
| D: Inlet connection | 1/2" CPVC socket |
| E: Outlet connection | 1/2" FIP thread |
| F: Hex diameter | 1" |

| | |
|------------------|-----------------|
| ITEM # SUBMITTED | _____ |
| JOB NAME | _____ |
| LOCATION | _____ |
| ENGINEER | _____ |
| CONTRACTOR | _____ |
| PO# | _____ TAG _____ |



Item Number

615-C215