

LARGE DIAMETER CPVC TRANSITION FITTINGS

647-CG SERIES

MetalHead™

SPECIFICATION

Sioux Chief ASTM D2846 CPVC transition fittings shall be used in plumbing and heating systems for safe distribution of hot or cold water. Fittings shall be used for fluid communication with plumbing devices and fixtures. Transition fittings shall be listed to appropriate standards including ASTM fitting end specifications. Fittings shall be generally manufactured by forming brass to capture CPVC ends thereby protecting/shrouding connection ends.

MATERIALS

Plastic: CPVC

Brass: No Lead, Dezincification (DZR) resistant & Stress Corrosion Cracking (SCC) resistant

O-ring: EPDM

MAXIMUM TEMPERATURE

140°F

CERTIFICATIONS

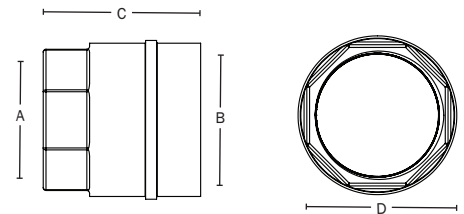
cUPC, FGG/BM/CZ system compatible

INSTALLATION LIMITATIONS

Do Not expose CPVC transition fitting to heat above those listed on tubing. Excessive heat will damage the integral o-ring seal. Do not install damaged fittings. Do not alter fittings. Do not solder or braze in close proximity to fitting unless it is protected with a heat-blocker to protect/keep the fitting under 140°F. Keep fitting free from hazardous chemicals or chemical vapors.

DIMENSIONS

	647-CG5	647-CG6	647-CG7
A: FIP thread connection	1¼"	1½"	2"
B: CPVC Sch. 40 socket connection	1¼"	1½"	2"
C: Overall height	2½"	2 ¹⁵ / ₁₆ "	3 ⁵ / ₁₆ "
D: Overall hex width across flats	1 ⁷ / ₈ "	2 ¹ / ₈ "	2 ⁹ / ₁₆ "



647-CG7

ITEM # SUBMITTED	_____
JOB NAME	_____
LOCATION	_____
ENGINEER	_____
CONTRACTOR	_____
PO#	_____ TAG _____



Create Item Number

647-CGA

e.g. 647-CG5: 1¼" CPVC socket × 1¼" FIP

CONNECTION SIZE A

5 = 1¼" CPVC × FIP

6 = 1½" CPVC × FIP

7 = 2" CPVC × FIP