

# MANIFOLD – ASTM F1960 PEX

▶▶ 672 SERIES

BranchMaster™

## SPECIFICATION

Sioux Chief 672 Series BranchMaster™ PEX manifolds shall be used in plumbing or heating systems for safe distribution of hot or cold water to supply fixtures. Designed in accordance with ASTM F1960

## MATERIALS

**Trunk:** Type L copper tube

**Trunk Connections:** Copper, C69300 Brass<sup>1</sup>, CPVC<sup>2</sup>

**Branch Connections:** C69300 Brass<sup>1</sup>

## CERTIFICATIONS

NSF-372 compliant, IAPMO listed

Note: Connection specifications are limited to those called out in their respective ASTM standards for pipe and fittings.

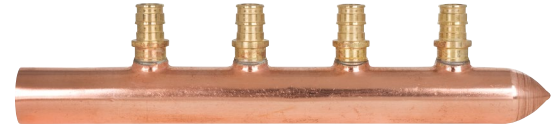
## INSTALLATION NOTES

Full installation instructions can be found at [www.siouxchief.com](http://www.siouxchief.com). Hot water manifolds should be located within the first six feet after a water heater to aid in hot water delivery times. Do Not recirculate back through any manifold branch. Do not expose manifolds to heat in excess of 180°F. Do not install damaged manifolds. Do not alter manifolds. Do not solder or braze in close proximity to manifold unless it is protected with a heat-blocker to protect/keep the manifold under 180°F. Keep manifolds free from hazardous chemicals or chemical vapors.

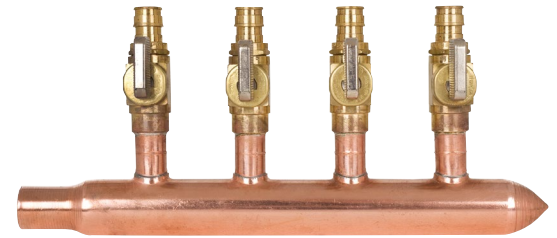
1: Material is DZR and SCC resistant, compliant with NSF-61 & 372, and compliant with California No Lead Plumbing Law

2: FGG/BM/CZ system compatible

ITEM # SUBMITTED	_____
JOB NAME	_____
LOCATION	_____
ENGINEER	_____
CONTRACTOR	_____
PO#	_____ TAG _____



672WG0440



672WW0430



## Create Item Number

**672 ABC**

e.g. **672WG03C0:** 1" Type L copper trunk, three 1/2" F1960 PEX branches, 1" CPVC inlet x spun closed

### BRANCH TYPE A

**WG** = 1/2" F1960 PEX - Brass

**WV** = 1/2" F1960 PEX - Brass ball valve

### BRANCH QTY B

**02** = 2 branches

**03** = 3 branches

**04** = 4 branches

**06** = 6 branches

**08** = 8 branches

**10** = 10 branches

**12** = 12 branches

### TRUNK TYPE C

**30** = 1" Type-L copper, 3/4" male sweat x spun closed

**40** = 1" Type-L copper, 1" male sweat x spun closed

**44** = 1" Type-L copper, 1" male sweat x 1" male sweat

**90** = 1" Type-L copper, 3/4" F1960 PEX x spun closed

**99** = 1" Type-L copper, 3/4" F1960 PEX x 3/4" F1960 PEX

**C0** = 1" Type-L copper, 1" CPVC x spun closed

### Note:

Not all option combinations are STOCK manifolds.

For non-stock manifolds, a minimum of 25 pcs is

required and extended lead times may apply.