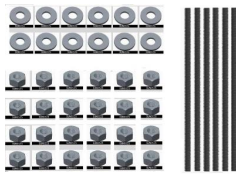


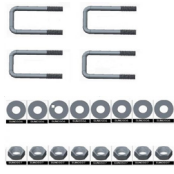
Installation Guide

837 Series Adjustable Plate-Type Fixture Carrier

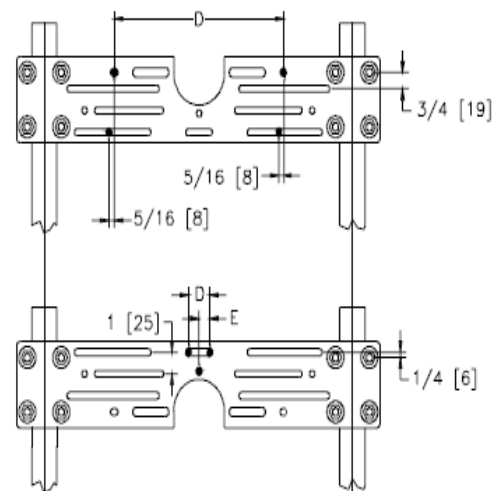
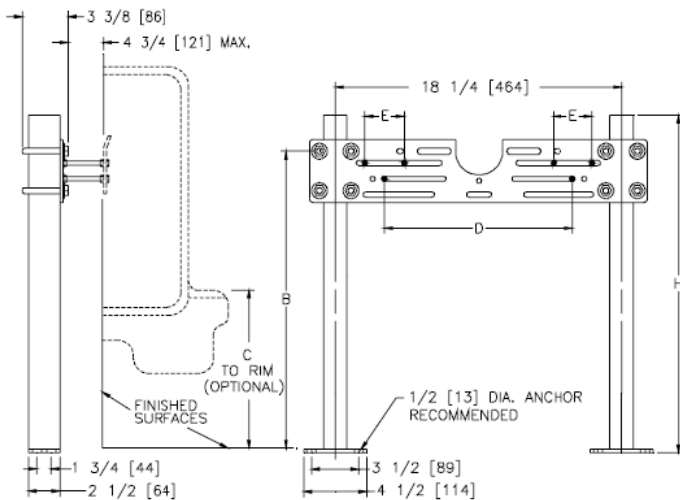
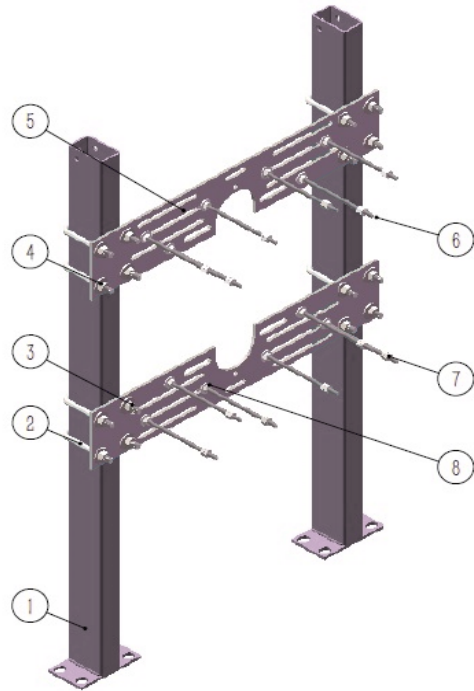
PART	SINGLE QTY	DUAL QTY	DESCRIPTION
1	2	2	Upright w/ welded feet
2	4	8	U-Bolt
3	8	16	3/8 Washer
4	8	16	3/8-16 Nut
5	1	2	Bearing Plate
6	6	12	1/4-20x6 Rod
7	24	48	1/4-20 Nut
8	12	24	1/4 Washer



HW5020 Hardware
Bearing Plate part #S4101



HW5020-2 Hardware



- STEP 1:** Attach carrier plate(s) to rectangular upright.
Use (2) u-bolts, (4) washers, and (4) nuts per plate, per upright.
- STEP 2:** Tighten at correct elevation.
- STEP 3:** Set assembly in correct position and anchor to floor using 1/2" bolts (supplied by others).
A minimum of two diagonally placed bolts per upright are recommended for proper installation.
- STEP 4:** Verify alignment and elevation.
- STEP 5:** Install rods, washers, and nuts to plate(s) per fixture manufacturer's rough-in dimensions.