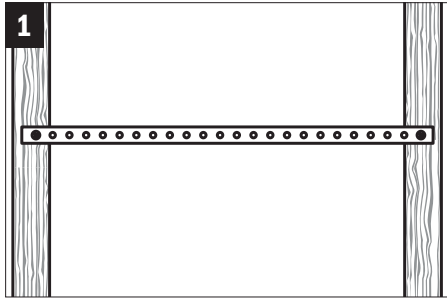


SimpleStrap™

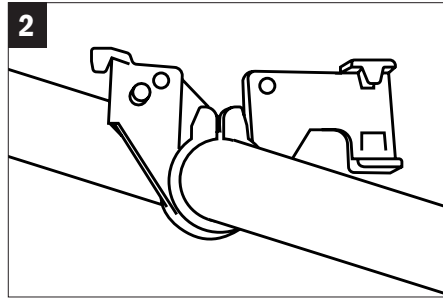
Installation Instructions



Attach flat Support Bracket to studs using nails or screws.

Fije la ménsula plana a los montantes con clavos o tornillos.

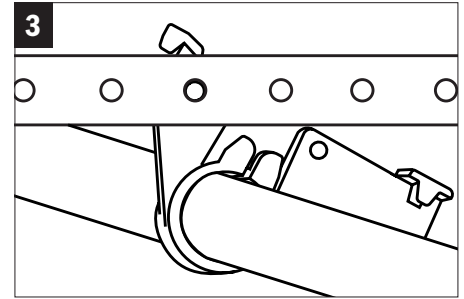
Fixer la console de support plate aux montants à l'aide de clous ou de vis.



Insert tube into SimpleStrap clamp.

Inserte el tubo en la abrazadera SimpleStrap.

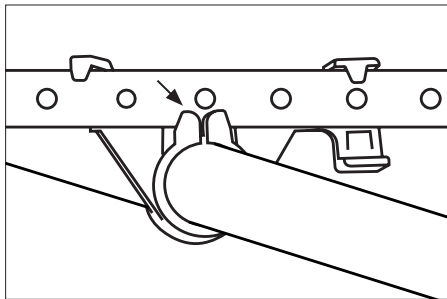
Insérer le tube dans la bride SimpleStrap.



Align tooth through one of the bracket holes, twist clamp counterclockwise, and click tabs onto bracket.

Alinee el diente a través de uno de los orificios de la ménsula, gire la abrazadera a la izquierda y encaje las lenguetas en la ménsula.

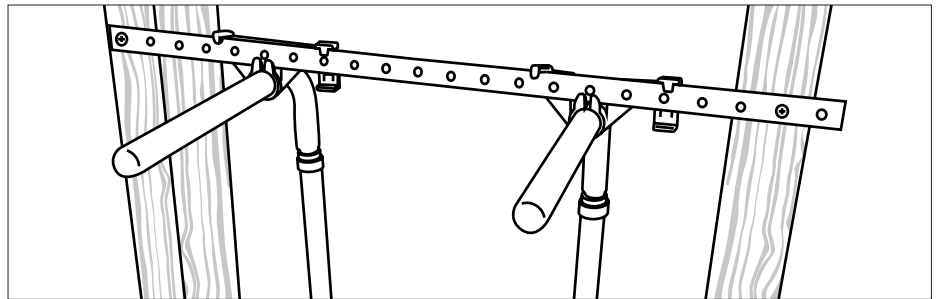
Aligner la dent à travers l'un des trous de console, tourner la bride en sens antihoraire et enclencher les languettes sur la console.



Note: The ears of the clamp should lock on the front of the bracket.

Nota: Las orejas de la abrazadera deben trabarse al frente de la ménsula.

Remarque : les oreilles de la bride doivent se verrouiller sur l'avant de la console.



Completed installation.

Instalación terminada.

Installation terminée.

24110 South Peculiar Drive
Peculiar, Missouri 64078
P 1.800.821.3944
F 1.800.758.5950



#IS-SIMPLESTRAP 2/15

Supply | Drainage | Support

www.siouxchief.com

TAKE THE FIELD.

